

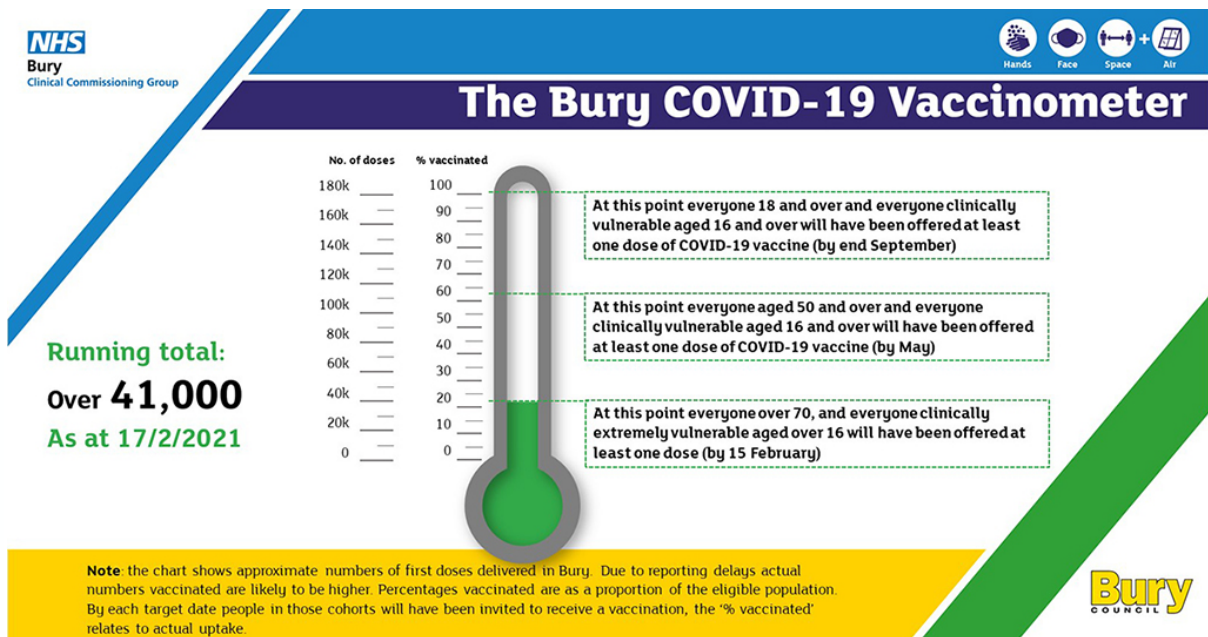
BURY

Update

Latest Covid-19 advice for the borough of Bury – 18 February, 2021

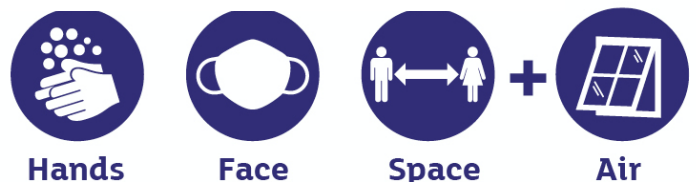
Bury's Vaccinometer tops 41k – and counting...

Around 41,000 people registered with a Bury GP have now been vaccinated against coronavirus at a local vaccination centre.



This means that nearly 23% of the eligible population (182,100) have been given at least one of the two jabs necessary to protect against the potentially fatal illness.

The vast majority of cohorts 1-4 (everyone aged 70+ and clinically extremely vulnerable people over 16) have now either had their jab or have an appointment booked. Anyone who is in the Top 4 tiers and has not been booked in is urged to contact their GP.



The vaccination programme has now moved on to its second phase, i.e. people in Tiers 5 to 9. People aged 65 to 69, those who are clinically vulnerable and adult carers – cohorts 5 and 6 - are now being invited to receive the first dose of the vaccine, and will be contacted when it is their turn.

Bury's jabs are being carried out by medical staff at four vaccination centres run by the Primary Care Network: the Elizabethan Suite in Bury, Bealey's in Radcliffe, Ramsbottom Civic Hall, and Prestwich Walk-in Centre.

A programme of vaccinating eligible housebound people is well under way, and the council is also offering transport to people who are clinically extremely vulnerable and cannot easily get to the vaccination centres as part of its humanitarian work with the group.

Vaccination targets:

- By 15 Feb: everyone aged 70+ and clinically extremely vulnerable people over 16 = 39,400 people. *Completed.*
- By May: everyone aged 50+ and clinically vulnerable people over 16 = a further 72,700 people.
- By end September: everyone 18+ and clinically vulnerable people aged 16 and 17 = the remaining 70,000 people.

Frontline health and social care staff are also being vaccinated as priority groups.

Bury's vaccination figures will be higher once results from hospital and mass testing sites are added in.

Remember:

- Vaccinations are given to people in the priority order set by the Government
- When it's your turn, you will be invited to have a vaccination.
- Remember to go back for your second jab, up to 12 weeks from your first, once you are given an appointment for it, in order to have increased protection
- You must still follow the Covid-safe rules even if you have been vaccinated – it takes several weeks for the vaccine to work, and you may still be able to catch the virus and pass it on.

Information on the vaccine can be found on the council's website: www.bury.gov.uk/coronavirus-vaccine

Case rates in Bury level off

After continued falls in Bury's Covid-19 case rates, the week up to 13 February saw a levelling off at 202.6 cases per 100,000 people. This was a very slight increase on the week before.

This flattening of the downward trend is concerning, especially in light of almost all new cases being of the new more transmissible virus - the more infectious variant of SARS-CoV2, B.1.1.7 now likely makes up more than 95% of new cases of Covid-19 in Bury.



Hands



Face



Space



Air

Numbers of people in local hospitals with Covid-19 have fluctuated with no clear pattern; however, the numbers receiving oxygen have fallen. We continue to see deaths registered in Bury with Covid-19 mentioned on the death certificate, although there are signs that the death rate is starting to fall.

To start pushing the figures down again, we all need to continue to follow the guidelines – only go out if absolutely essential, and those who do need to go out should keep their distance (think of 2 metres as the minimum distance, not the maximum distance) wear a face covering and wash their hands frequently.

LFT (Lateral Flow Antigen Testing) rapid tests for asymptomatic people are now being added to the weekly case total.

Week ending 13 February: infection rate (including LFT) 202.6 (387 new cases)

Week ending 6 February: infection rate without LFT 188.5 (360 new cases), with LFT 202.1 (386 new cases)

Week ending 30 January: infection rate (without LFT) 237.1 (453 new cases)

Week ending 23 January: infection rate (without LFT) 287.4 (549 new cases)

Getting tested in Bury

If you have any of the three most common symptoms of coronavirus - a high temperature, a new continuous cough, or a loss or change to your sense of smell or taste - we urge you to get tested to protect yourself and the people around you. Please get tested within the first 3-5 days of symptoms.

A range of testing options is available right across the borough:

No appointment needed at Bury's walk-through testing centre, open 10am-3pm, Monday - Friday: Chesham Fold, 95 Chesham Fold Road, Bury BL9 6JZ.

By appointment 8am-8pm, with some locations open seven days a week, at Department for Health & Social Care testing centres:

- The former Radcliffe Pool car park, Blackburn Street, Radcliffe
- Whitefield Library, Pinfold Lane, Whitefield
- The Metro Christian Centre, 13 Parkhills Road, Bury
- Longfield Centre car park (via Rectory Lane), Prestwich
- Great Eaves Road test site, Great Eaves Road, Ramsbottom

Bury's drive-through testing site at Waterfold Business Park is open by appointment only.

For the latest information about testing and availability visit www.bury.gov.uk/coronavirus-testing or call 0161 253 5515.



Hands



Face



Space



Air

Rapid community coronavirus testing

In Bury we are operating a targeted community testing programme which aims to identify people in certain settings or high-risk occupations who do not have coronavirus symptoms but could have the infection and therefore could pass the virus on to others without knowing it. The test is known as a 'lateral flow antigen test' and takes approximately 5 minutes at one of our testing facilities. The results are available in around 30 minutes and sent directly by email or SMS to the person's mobile device. There is no need to wait at the testing site for the result.

Targeted community testing is offered to businesses and critical workers who cannot work from home and includes taxi drivers, delivery drivers, 'blue lights' and health and social care staff, staff at schools and early years providers and essential retail and public transport workers, to name but a few.

At the borough's two targeted testing sites (Waterfold Business Park and Mosses Community Centre) there is capacity to undertake around 200 tests per day. Access to targeted community testing is by appointment only at link <https://nhsburyccg.simplybook.cc/v2/>

Covid-19 testing support for business

To support critical workers and businesses, the Government recently announced support for organisations with over 50 employees to access a supply of Lateral Flow Devices to do rapid Covid-19 tests. The results of these tests are known within 30 minutes.

This programme is open for businesses where some or all of their workforce can't work from home, allowing them to develop their own onsite Covid-19 testing service. It's critical that businesses take part in this programme as it will support Bury in identifying outbreaks earlier, reducing the amount of the people who could come in contact with the virus and limit the impact on the wider economy.

If your business is interested in taking part in testing then you can get further information at <https://www.gov.uk/get-workplace-coronavirus-tests> or please don't hesitate to contact buccg.covid19testing@nhs.net. For those businesses where it is not practical to set up their own Covid-19 testing service their workforce can access the test facilities at Waterfold and Mosses using the following link <https://nhsburyccg.simplybook.cc/v2/>

Helping people through the toughest time

Support in the community

Support for clinically extremely vulnerable residents who have been asked to shield, other vulnerable residents and residents who need to self-isolate continues through the Bury Community Hubs.

The hubs can help with food shopping and collecting prescriptions as well as telephone befriending and support to get online for things like priority supermarket delivery slots.

The Community Hubs are working with partners in mental health, Bury VCFA, Citizen's Advice Bureau, Age UK and Bury Community Support Network, which includes access to foodbanks in Bury. We have a network of individual volunteers in every part of Bury who we can 'buddy' you up with for regular



Hands



Face



Space



Air

chats, support to get online, help to collect your prescriptions and medication, and they can help with your shopping too.

Call 0161 253 5353 (Monday to Friday, 9am to 5pm) for information or to talk to us about what support you might need.

Mental health support

As the coronavirus pandemic continues, life has changed for all of us and it's natural that this may cause you to feel worried or anxious, lonely or frustrated. If you feel you need some extra support, Bury's Getting Help Line is a confidential telephone service run by the voluntary sector for people of all ages who are experiencing difficulties with their mental wellbeing.

You can access advice, guidance and signposting to local services by calling the Getting Help Line on 0161 464 3679. Find out about other mental wellbeing support at www.bury.gov.uk/mentalwellbeing

Community Champions – get ready for the launch

Get ready for 'Community Champions' – a new scheme to better connect Bury and begin to address the unequal impact Covid-19 has had on certain parts of society.

A comprehensive scheme using funding from the Ministry of Housing and Local Communities is coming soon. This will be used to:

- Create a Community Champions network of up to 250 individuals representing places, groups and faiths
- Create a dedicated Community Champion within each of Bury's five Community Hubs to co-ordinate our engagement work
- Invest in community networks – helping existing groups to extend their work and reach as community connectors, passing on information and feeding back issues.
- Making funding available to help mitigate the impacts of Covid-19
- Increasing understanding of Bury's communities to be able to plug any gaps.

Further details will be unveiled shortly - watch this space for further information!

Grant payments reaching businesses in need

Grant payments continue to be made to Bury businesses coping with the financial effects of the coronavirus lockdown.



Hands



Face



Space



Air

The council's economic development team has worked with local businesses to develop grant support packages aimed at supporting companies of different sizes and types whose survival is crucial to Bury's economy and local jobs, and at those who have not received help so far.

Information on the various grants and other support available is on the Bury Means Business website: <https://burymeansbusiness.bury.gov.uk/> and help and advice is available by emailing Investin@bury.gov.uk

Next update due Thursday 25 February, 2021.

Find up-to-date information at bury.gov.uk/coronavirus



Hands



Face



Space



Air